

4

3

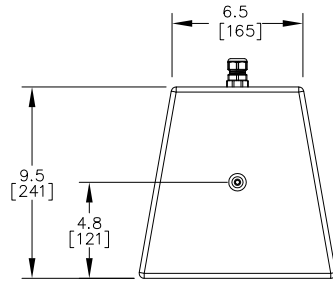
2

1

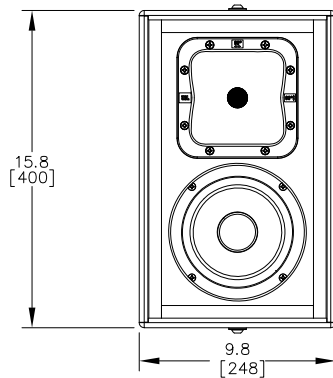
THESE DRAWINGS AND SPECIFICATIONS ARE THE PROPERTY OF JBL INCORPORATED. THEY ARE ISSUED IN STRICT CONFIDENCE AND SHALL NOT BE REPRODUCED OR USED AS THE BASIS FOR MANUFACTURE OR APPARATUS WITHOUT WRITTEN PERMISSION.

ALL MATERIAL SPECIFIED ON THIS DRAWING SHALL CONTINUALLY COMPLY WITH THE EFFECTIVE EU RoHS DIRECTIVE, CURRENTLY 2011/65/EU, INCLUDING ALL AMENDMENTS.

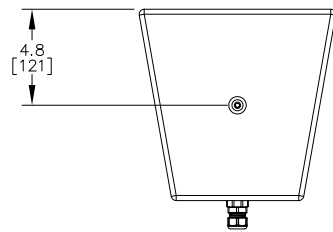
REVISIONS				
LTR	DESCRIPTION	DRFT	DATE	APPR
B	UPDATE DIMENSIONS	MM	4/3/26	



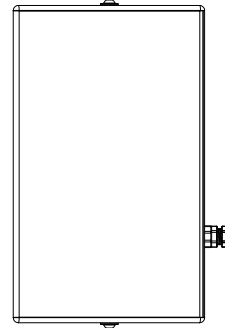
TOP



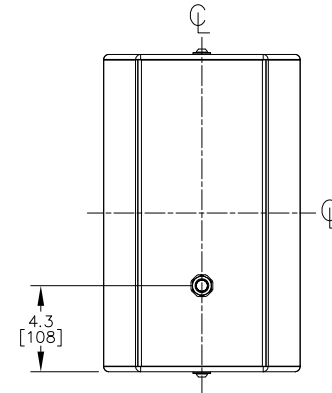
FRONT



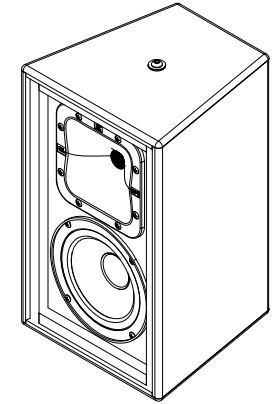
BOTTOM



SIDES



REAR



8. SUSPENSION POINTS: 2X M8 THREAD: TOP AND BOTTOM.
7. WEIGHT: 16 LBS (7.3KG).
6. COMPONENTS: LF – 1X 226J 6" WOOFER, HF – 1X 2414H COMPRESSION DRIVER, 1X PTB99HF-1 WAVEGUIDE.
5. GRILLE MATERIAL: 18GA STAINLESS STEEL WITH STAINLESS STEEL VAPOR BARRIER (NOT SHOWN).
4. INPUT CONNECTORS: SEALED GLAND NUT WITH 7" 2-CONDUCTOR CAPTIVE CABLE.
3. COLOR: STANDARD GRAY; WHITE (-WH) AND BLACK (-BK) AVAILABLE.
2. FINISH: 0.060" THICK GRAY COARSE TEXTURE FIBERGLASS (-WRX) OR PROPRIETARY DURABLE TEXTURE (-WRC) FINISH.
(NOT REFLECTED IN DIMENSIONS ABOVE)
1. CABINET MATERIAL: 12mm EXTERIOR GRADE BALTIC BIRCH
- NOTES: (UNLESS OTHERWISE SPECIFIED)

TOLERANCES (UNLESS OTHERWISE SPECIFIED) X.XX ± .063 INCH X.X ± .125 INCH ANGULAR TOLERANCE OF 0°±30' FRACTIONAL DIMENSIONS ± 1/32 • DIMENSIONS ARE INCHES INCHES [MM] • ALL DIMENSIONS ARE FINISHED DIMENSIONS • DO NOT SCALE DRAWING		HARMAN JBL Professional 8500 Balboa Blvd Northridge, CA 91329 USA	
		TITLE CUSTOMER DRAWING: AC16-WR	
SIZE A	DRAWING NO. 1000336395	REV B	
SCALE NTS	SHEET 1	OF 1	

4

3

2

1